

SmartGo Smart Belt

Luggage Strap + Digital Scale+ Lock

USER GUIDE

SG-B230 / 231

www.smartgo.club



info@smartgo.club

© SmartGo Worldwide Inc.

General Information

This strap has built-in user friendly scales so the weight of luggage can be easily and conveniently measured. The strap also comes with a 3 digit combination lock to secure the luggage. This product is not waterproof, so please keep it dry and treat it with care.

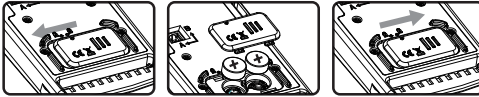
Warning

Please take care when fastening the strap so you avoid getting your fingers caught between the casing and buckle (See images below)

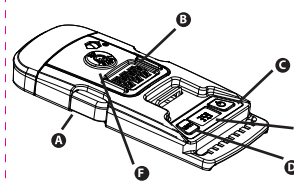


Battery

This product is powered by 2 pcs of L1154(LR44) Alkaline battery. When the icon " " flashing It means the battery needs changing. Push the battery lid to replace the battery, ensuring that the correct polarity is respected.(See images below)



Product description

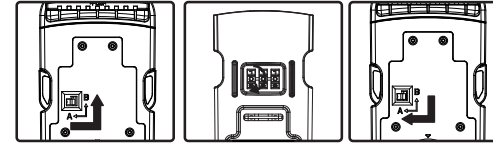


- A** Button for code setting
- B** code wheel
- C** ON/OFF Button
- D** UNIT Button
- E** Display
- F** TSA lock(optional)



Change personal lock code

The initial lock code is 0-0-0, push the button from A to B, then change the code wheel to set your personal code. push the button from B to A when you setted your code.



Main functions

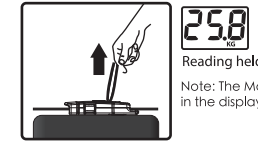
Press the ON/OFF button to turn the display on. The display should be clear and bright.If the display is dim, replace the battery.



Press the UNIT button to change Metric or Imperial unit system(Kg or Lb)The range of measurement is 3.0Kg to 35.0 Kg (or 7Lb to 77 lb)



Attach the strap to your luggage and lift the luggage via the webbing for at least 3 seconds. The max. weight of luggage will be shown and held in the display.



Note: The Max. weight reading will not be held in the display if the weight is less than 3Kg.

Press the ON/OFF button briefly to reset the data and press and hold the button for 2 seconds to turn the display off.



Auto power off

This product will automatically power off if there is no input for 120 seconds. Press button C to turn the power on again.



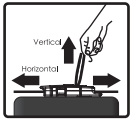
Reversible Display

Press again 2 seconds to resume.Press button D for 2 second to reverse the display in 180 degrees.



IMPORTANT INFORMATION

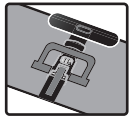
For an accurate reading, please ensure that when weighing, the luggage is always kept horizontal and the webbing strap is always kept vertical.



Please ensure that the top of the product is kept free from any obstructions or you will obtain an in-accurate reading.



If you cannot comfortably lift your luggage, do not attempt to weight it. Please tie the product to the shorest side of luggage case.Keep you back straight, bend your knees and then start lifting. Avoid twisting your back or leaning sideways whilst lifting.



警告

在系上行李带时请小心不要夹到手 (参见附图)

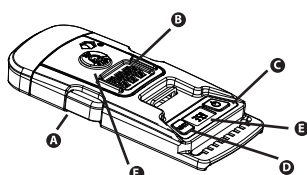


电池

本产品使用2只L1154 (LR44) 碱性电池。当字符" "闪烁时请更换电池, 推开电池仓盖更换, 注意电池极性 (参见附图)



产品简介

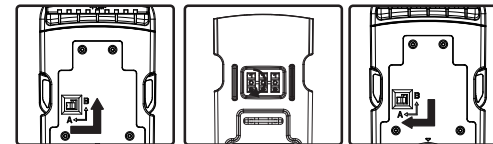


- A** 密码设置按钮
- B** 号码轮
- C** 开关按钮
- D** 单位选择按钮
- E** 显示屏
- F** TSA锁 (可选)



设置个人密码

初始密码为000, 将按钮由A推至B, 设置个人密码, 将按钮由B推至A以设定密码。



主要功能

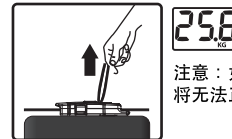
按开关打开, 显示屏应清晰并足够光亮, 若过暗请更换电池



按单位选择按钮选择公制或英制 (公斤或磅)
测量范围介乎3-35公斤 (约7-77磅)



将行李带系在行李上, 拉称重条并保持稳定约3秒钟, 重量将显示在显示屏上



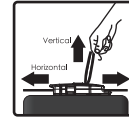
注意: 如果重量小于3公斤, 将无法正确显示最终结果

快速按开关按钮可清除数据, 按超过2秒钟可关闭设备

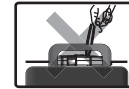


注意

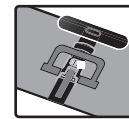
为确保称重时准确, 请保持行李箱水平和称重条垂直。



请移除产品上的障碍物以读取正确的重量。



称重时请注意姿势, 小心处理, 避免受伤。



US . EU & CHINA
Product Patented



美国, 欧洲和中国专利产品

