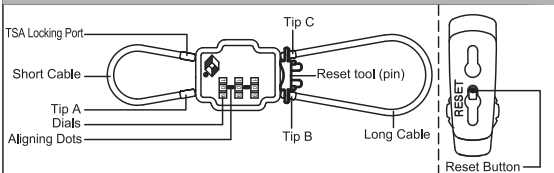
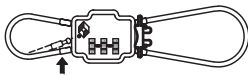
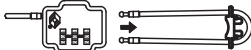


A. Lock Parts**B. SET YOUR OWN COMBINATION****Factory Pre-set at 0-0-0**

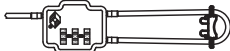
1. Turn dials 0-0-0 to align with the small dots and pull out Tip A to unlock.



2. Move the reset tool away from the body of the lock (see diagram below). Release/remove Tip B and Tip C.



3. Reinsert the reset tool, but change its direction (see diagram below). Reinstall Tip B and Tip C to the lock.



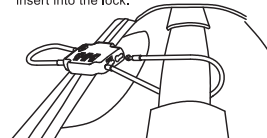
4. Press the reset tool into the reset button hole firmly. At the same time, turn the dials to set the new combination.



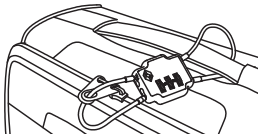
P.S.: You can also use a sharp object to push the reset button all the way to set new combination.

C. FUNCTIONS

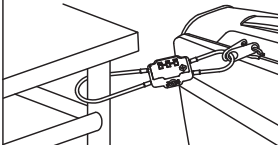
- 1-1. Use any end of the long cable to go through handle on your luggage, then insert into the lock.



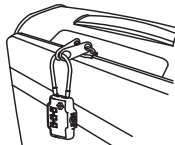
- 1-2. Use Tip A to go through zipper pullers and insert into lock, turn dials to lock.



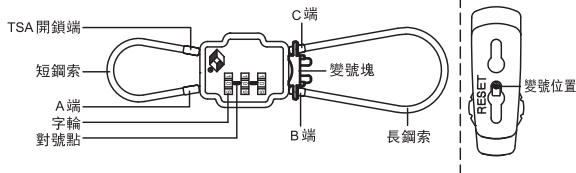
2. Attach the lock on fixed objects to secure your belongings.



3. Release cable Tip B and Tip C, it could be used as a small padlock.

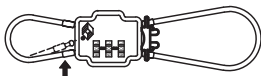


A. 各部名稱

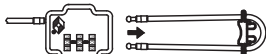


B. 密碼設定方式 出廠密碼設定000

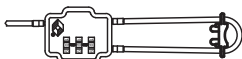
1. 轉動字輪000至對號點位置，取下A端鋼索即開鎖。



2. 將變號塊移動遠離鎖具(如圖)，並取下B端鋼索及C端鋼索。



3. 將變號塊改變位置及方向(如圖)，且將B端鋼索及C端鋼索組入鎖具。



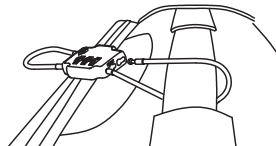
4. 將變號塊緊貼鎖具並持續壓持(如圖)，轉動字輪設置您的新密碼，鬆手即完成密碼設置。



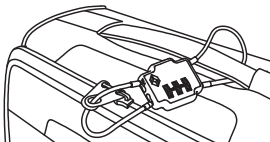
註：如用類似原子筆尖端之工具朝變號位置插入到底，轉動字輪亦可設定密碼。

C. 使用方式

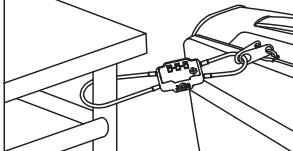
- 1-1. 將長鋼索任何一端穿過皮箱把手並插入鎖體。



- 1-2. 將鋼索A端穿過拉鍊片並插入鎖體，轉動字輪至非密碼即上鎖。



2. 如圖可將旅行箱鎖在固定物。



3. 可將鋼索B端C端卸下即可當一般掛鎖使用。

